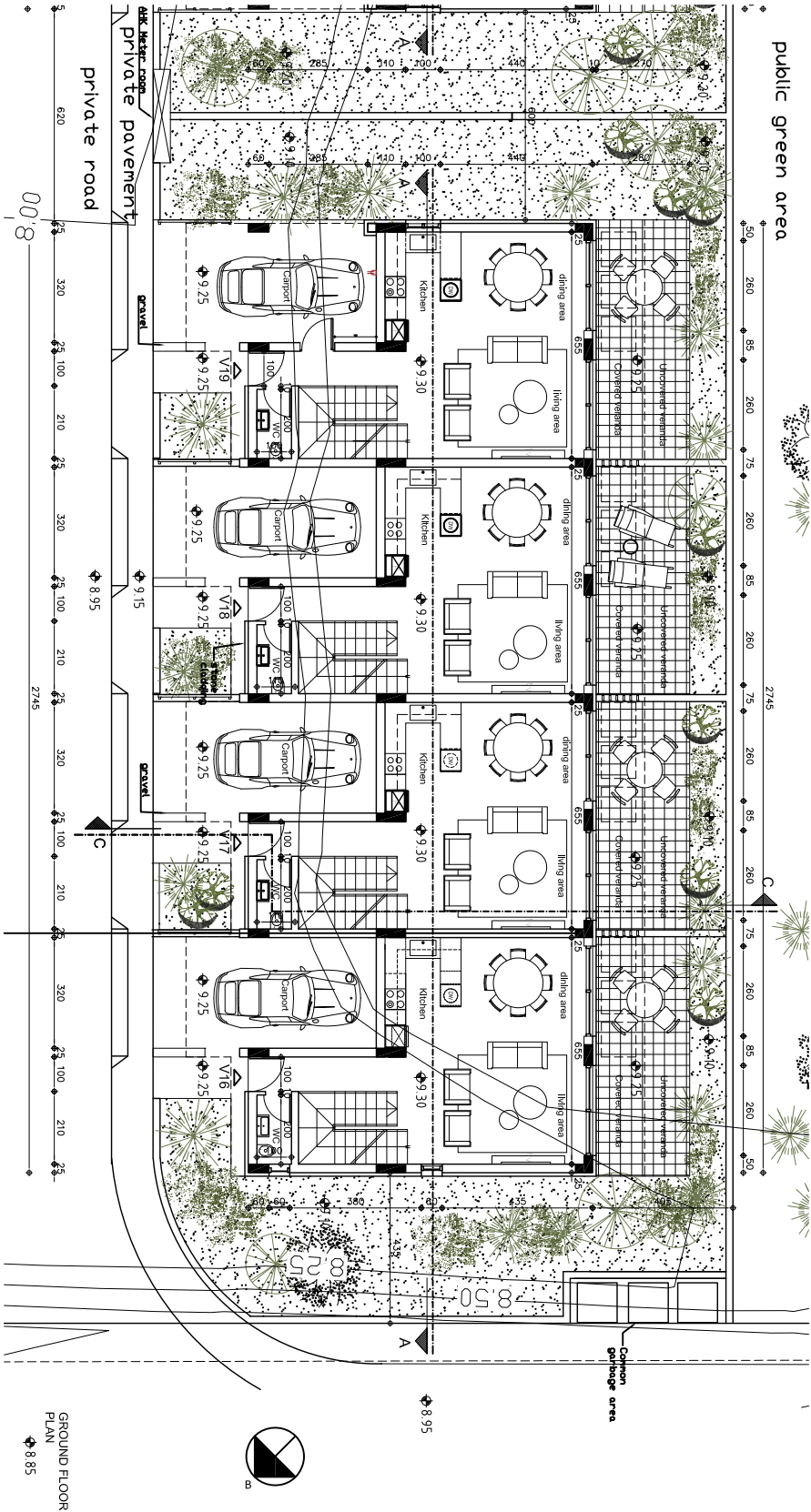
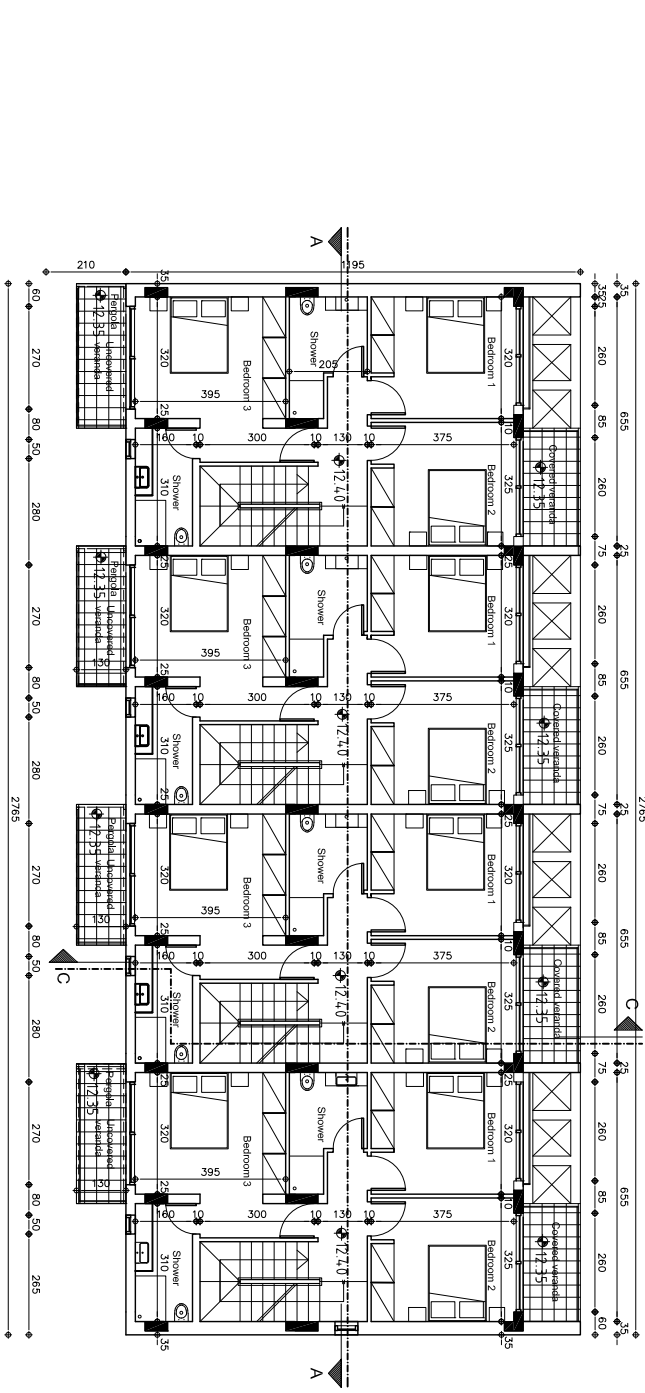


public green area



GROUND FLOOR PLAN
8.85



FIRST FLOOR PLAN



Proposed levels

Contour lines

- REV 11- ARCHITECTURAL CHANGES
- REV 12- ARCHITECTURAL CHANGES
- REV 13- CHANGES ON STRUCTURAL SYSTEM
- REV 14- CHANGES ON WC
- REV 15- CHANGES ON KITCHEN ROOMS
- REV 16- ATTACH WARDROBES VANITY UNITS
- REVISIONS: THE OUTSIDE
- REVISIONS: THE OUTSIDE
- REVISIONS: THE OUTSIDE
- REV 18- MASONRY: 19- Construction of aluminum door (with glass pane to the top half) to the carport allowing for direct access to the house.

R. ARISTODEMOU
ARCHITECTS -
ENGINEERS

8 Aefellou 1st St., P.O.Box 60288, 8101 Patras, Cyprus
Tel: +357 29832303 / 29832388, Fax: +357 29838250
E-mail: arch@aristodemos.com
URL: <http://www.aristodemos.com>

ARCHITECT	DESIGNER	ENGINEER
(Name)	(Sized by)	(Date)
VASSILOU	ARISTODEMOU	20/02/2018
VASSILOU	ARISTODEMOU	17/09/2018
VASSILOU	ARISTODEMOU	03/10/2018
VASSILOU	ARISTODEMOU	17/12/2018
VASSILOU	ARISTODEMOU	21/02/2020

EPIC - PLAGE RESIDENCES PHASE 3
(Project)
TOTOSEBIA VEROSKIPOU
(Location)
BLOCK A
(Type)

1397
(Arch. No.)

1:100
(Scale)
AZ
(Sheet No.)

GROUND FLOOR PLAN